



STRENGTHENING BONDS: THE POWER OF FAMILY AND COMMUNITY ENGAGEMENT IN EDUCATION

Dr. Brad Keating
Executive Director and Engagement Officer
Engagement Unit
Clark County School District (CCSD)

Denise Diaz
Director
Family Engagement Department
Clark County School District (CCSD)

ccsd fast facts 2022-23

304,276 students

29,555 staff

378 schools

MAKING CONNECTIONS



016

QUESTION TOSS

Everyone writes a general question (e.g., what is your favorite movie?) on a piece of paper, signs their name, and crumples it into a ball. Then, students form a circle and toss the questions into the center.

Next, everyone chooses a question, finds the person who wrote it, and answers it.

Materials: Strips of paper

COMMUNITY BUILDERS



SEE



THINK



WONDER



It's All About Relationships



MESSAGING



Please enjoy our warm and cozy bathrobes. Wrap yourself in the comforts of home. If you feel you can't part with them, we'll be happy to charge your account. Please contact a Guest Services Representative at the front desk for details.



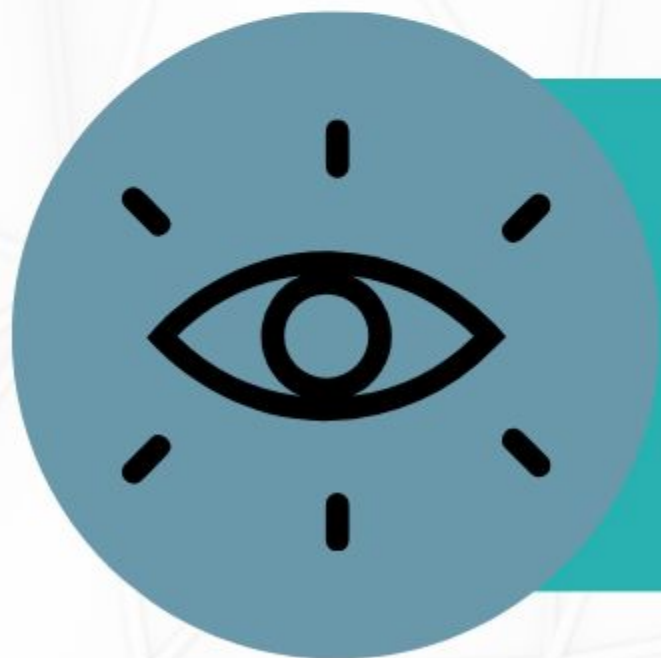
Love Me?
Then Don't Leave Me Behind.
Our signature robes are available for purchase. Just call and we will bring it to your room.

IT IS NOT WHAT WE SAY,
IT'S HOW WE SAY IT





WHAT DOES YOUR SCHOOL BELIEVE ABOUT FAMILY ENGAGEMENT?



WHAT DOES YOUR SCHOOL ENVIRONMENT SAY ABOUT WHAT YOU BELIEVE ABOUT FAMILY ENGAGEMENT?

THE 4 SCHOOL MODELS

1

Partnership School:

All families & and communities have something to offer – we do whatever it takes to work closely to ensure the success of every student.

2

Open Door School:

Families can be involved in our school in many ways – we work hard to get a lot of participation in our activities. When we ask for community support, people often respond.

3

Come If We Call School:

Families are welcome when we ask them but there's only so much they can offer. The most important thing they can do is help their kids at home. We know where to go in the community to get help if we need it.

4

Fortress School:

Parents belong at home, not at school. If students don't do well, it's because their families don't give them enough support. We are already doing all we can! Our school is an oasis in a troubled community. We want to keep it that way.

**WELCOME
ALL FAMILIES**

STANDARD 1

**COMMUNICATE
EFFECTIVELY**

STANDARD 2

**National
PTA**

National
Standards *for*
**FAMILY-SCHOOL
PARTNERSHIPS**

**COLLABORATE
WITH COMMUNITY**

STANDARD 6

**SUPPORT
STUDENT
SUCCESS**

STANDARD 3

**SHARE
POWER**

STANDARD 5

**SPEAK UP
FOR EVERY
CHILD**

STANDARD 4

4 Principles of Transformative Family Engagement

INCLUSIVE

Embracing and valuing diverse perspectives.



INDIVIDUALIZED

Meeting the unique needs of every family and child.



INTEGRATED

Connecting and aligning with the educational system.



IMPACTFUL

Empowering families to support their child's success.



The Four 'I's of Family Engagement



Linking to Learning



MOVING FROM QUANTITY TO QUALITY

PARENT INVOLVEMENT

- Open House
- Academic Nights
- Science Fairs
- Holiday Celebrations
- PTA/PTO Events
- Classroom Volunteers
- Social Activities



FAMILY ENGAGEMENT

- Interactive Open House
- Student Work Display and Scoring Rubrics
- Culturally/Socially Responsive Holiday Celebrations
- "Check Out Our Class Days"
- Parent-led lessons, parent expertise



INVOLVEMENT TO ENGAGEMENT

Purposeful and Interactive Opportunities to Build Knowledge and Skills

Parent Involvement	Family Engagement
Food with Family, Family Feast, Bagels with your Buddy, Lunch with Loved Ones, Cookies with those Who Care, Donuts with Dear Ones	Have the children interview their parent about their favorite time in school and compare it to their own experience in school, use conversation starters or would you rather to encourage language building and social interactions while building community
Movie Night	Select a book that has been made into a movie. Read the book prior to watching the movie. After the movie have the families compare and contrast the book to the movie, play and pause the movie to ask open ended questions, interactive watching



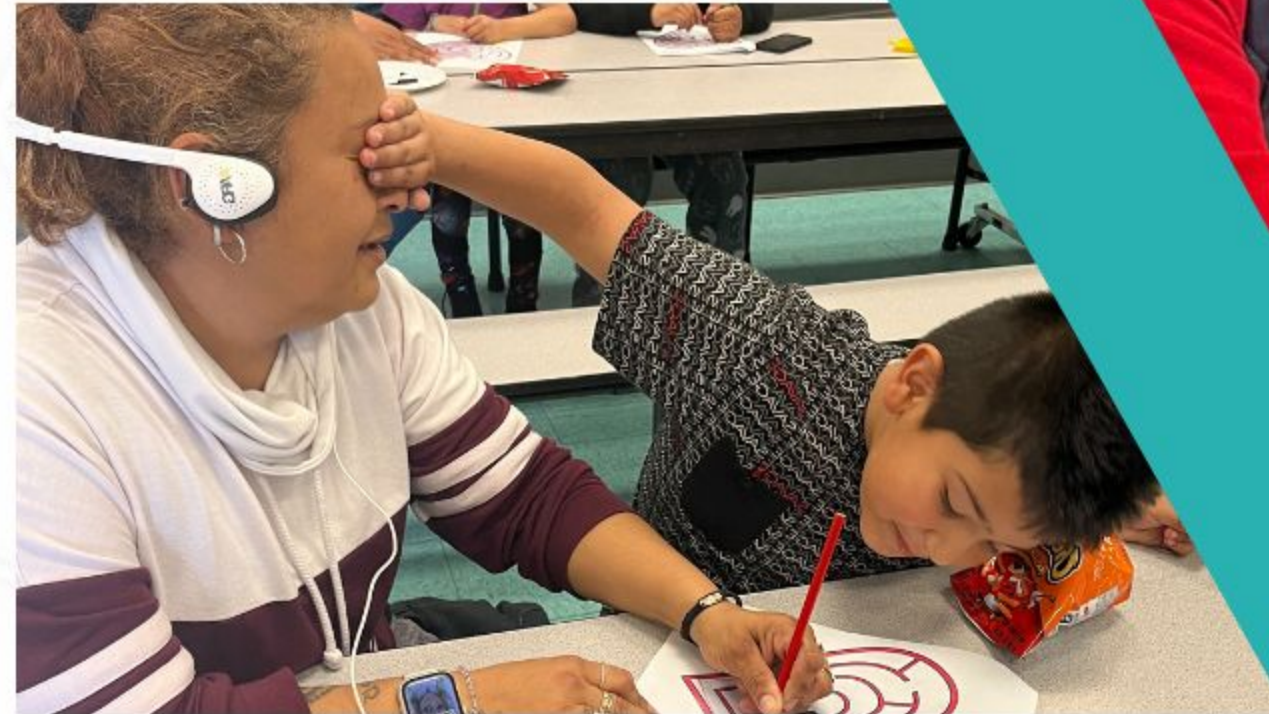


Things to consider:

- **Whole child**
- **Whole family**
- **Differentiated**

picture of partnerships - look at harmony slide deck

UNIVERSITY OF FAMILY LEARNING (UFL)



FAMILY ENGAGEMENT CENTERS (FEC)



WEEKEND OPPORTUNITIES



Parent Led Learning

THE BOOK BUS



TOOLS FOR SCHOOLS



CEREMONY OF ACHEIVEMENT



we need to get a sizzle reel video this year from ceremony of achievement



—Let's—
GROW
together

- Schools striving for family engagement lead with their ears--listening to what parents think, dream, and worry about.
- The goal of family engagement is not to serve clients but to gain partners.
- Effective family engagement requires the school to develop a relationship-building process focused on listening.

Thank You FOR JOINING US TODAY

FOLLOW US ON SOCIAL MEDIA!



@CCSDfamily



CONTACT US

FAMILY ENGAGEMENT DEPARTMENT
(702)799-0303 OPT 2
FAMILYENGAGEMENT@NV.CCSD.NET
ENGAGE.CCSD.NET



CHECK IT OUT!